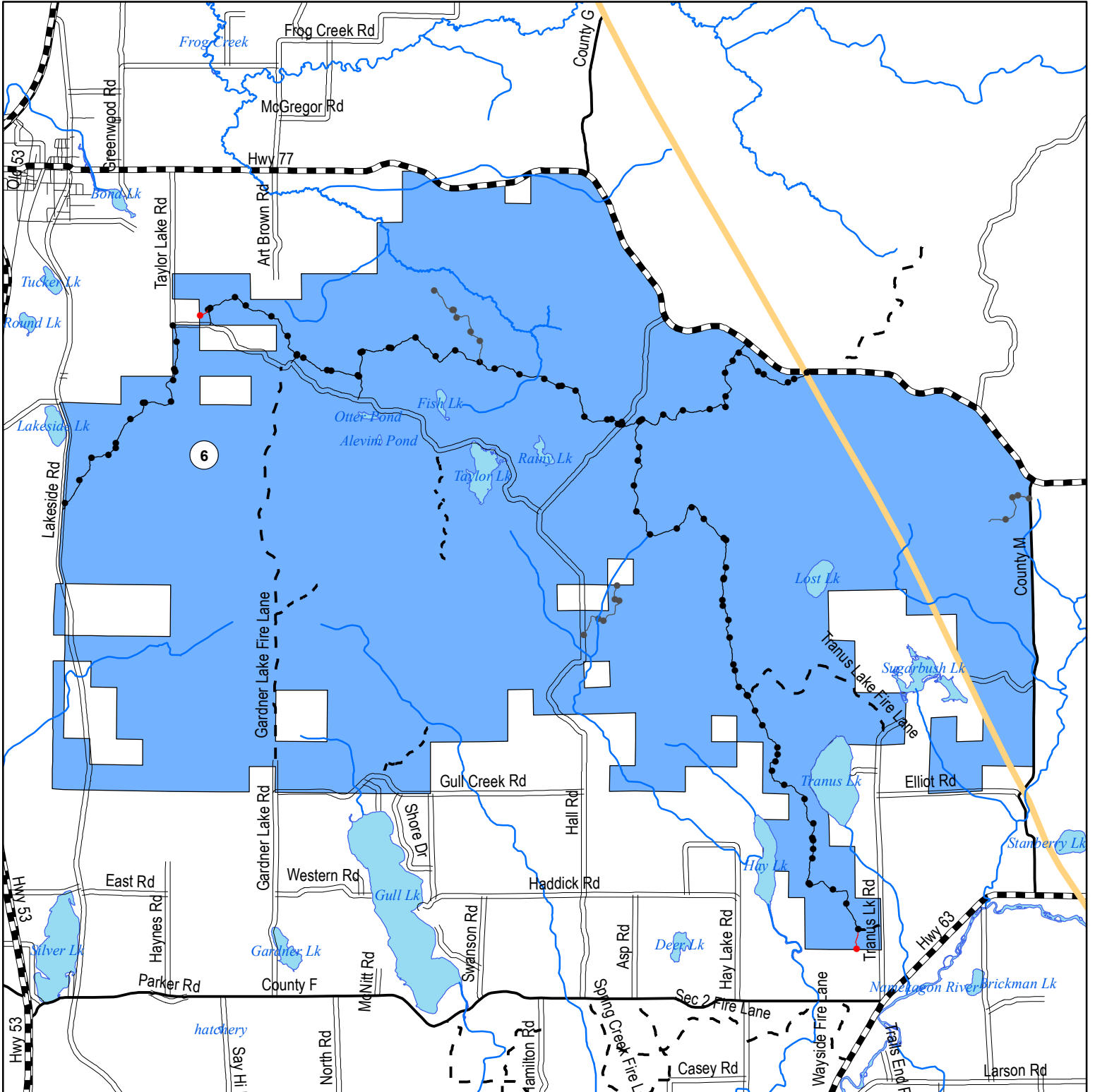


Washburn County Forest - Road and Access Plan

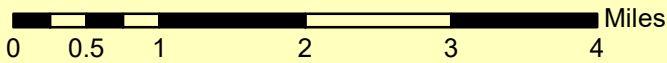
Unit 6: Gardner Unit

See general regulations for more information



Legend

- Primitive Unit - Closed to Public Motor Vehicle Use, unless mapped as open
- Intermediate Unit - Only mapped roads open to public motorized use
- Open Unit - Open to public motorized use unless otherwise signed, gated or bermed



Access Type

- Open to ATV/UTV, cars, trucks
- Open ATV/UTV, cars, trucks except winter (snow trail)
- Open to ATV/UTV
- Open to ATV/Snowmobile during winter only
- utility corridor - NO MOTORIZED VEHICULAR TRAVEL

