

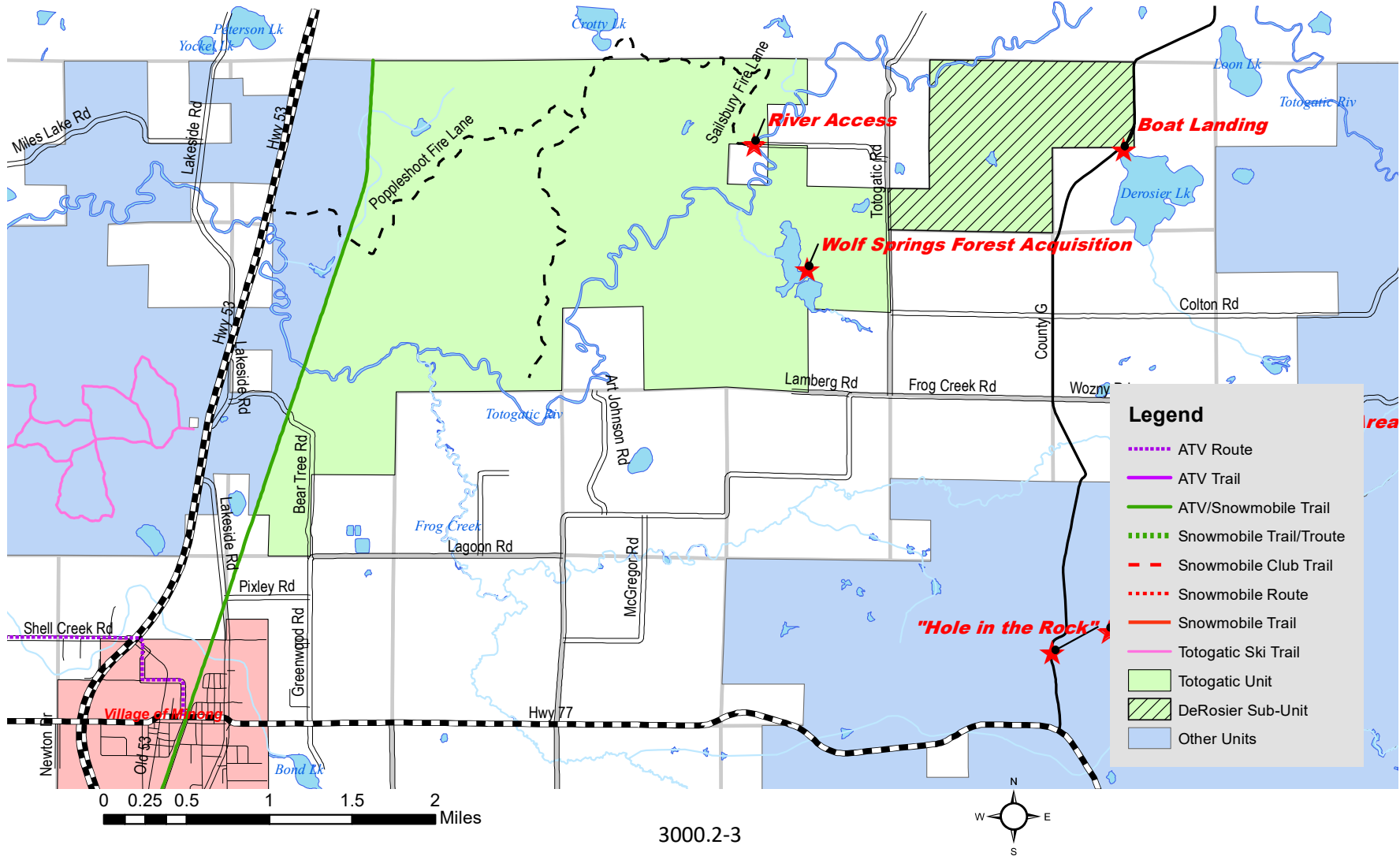
WASHBURN COUNTY FOREST COMPREHENSIVE LAND USE PLAN
INTEGRATED RESOURCE MANAGEMENT UNITS
CHAPTER 3000.2 – TOTOGATIC UNIT

TABLE OF CONTENTS

3000.2.1	RESOURCE MAP	3000.2-3
3000.2.2	FOREST RECONNAISSANCE COMPARTMENTS	3000.2-5
3000.2.3	UNIT ACREAGE	3000.2-5
3000.2.4	FOREST TYPES	3000.2-5
3000.2.5	ECOLOGICAL LANDSCAPES	3000.2-5
3000.2.6	LANDFORMS	3000.2-5
3000.2.7	SOILS	3000.2-6
3000.2.8	FOREST HABITAT TYPES	3000.2-6
3000.2.9	WATER RESOURCES	3000.2-6
3000.2.10	RECREATION	3000.2-7
3000.2.11	HISTORICAL, CULTURAL, ARCHEOLOGICAL	3000.2-7
3000.2.12	PROTECTION NEEDS	3000.2-8
3000.2.13	AESTHETICS	3000.2-8
3000.2.14	LAND CONTROL	3000.2-8
3000.2.15	FOREST MANAGEMENT GOALS AND GUIDELINES	3000.2-8
3000.2.16	SITE SPECIFIC MANAGEMENT GOALS AND GUIDELINES	3000.2-9
3000.2.17	FOREST TYPES MAP	3000.2-11
3000.2.18	SOIL TYPES MAP	3000.2-12

*Approved by Washburn County Board of Supervisors October 19, 2021
No Revisions*

3000.2.1 RESOURCE MAP



3000.2.2 COMPARTMENTS 92, 93, 94, 95

3000.2.3 ACRES 4,561 (former Unit 3 and east half Unit 2)

3000.2.4 FOREST TYPES

FOREST TYPE	1995 ACRES	1995 PERCENT	2005 ACRES	2005 PERCENT	2020 ACRES	2020 PERCENT
ASPEN	1911	43.9%	1836	42.2%	1871	41.0%
NON FORESTED WETLAND	557	12.8%	536	12.3%	582	12.8%
RED PINE	461	10.6%	469	10.7%	459	10.1%
BOTTOMLAND HARDWOOD	0	0.0%	0	0.0%	303	6.6%
SWAMP HARDWOOD	391	9.0%	553	12.7%	288	6.3%
LOWLAND BRUSH	259	5.9%	266	6.1%	280	6.1%
SWAMP CONIFER	337	7.7%	250	5.7%	188	4.1%
CEDAR	11	0.2%	10	0.2%	98	2.1%
TAMARACK	103	2.4%	92	2.1%	95	2.1%
WATER	50	1.1%	47	1.1%	82	1.8%
WHITE PINE	26	0.6%	17	0.4%	77	1.7%
FIR / SPRUCE	29	0.7%	45	1.0%	74	1.6%
OAK	146	3.3%	169	3.9%	68	1.5%
ROW	0	0.0%	0	0.0%	35	0.8%
GRASS	8	0.2%	40	0.9%	28	0.6%
UPLAND BRUSH	25	0.6%	26	0.6%	21	0.5%
NORTHERN HARDWOOD	6	0.1%	4	0.1%	7	0.2%
WHITE BIRCH	41	0.9%	1	0.0%	5	0.1%
TOTAL	4361	100.00%	4361	100.00%	4561	100.00%

**changes from 1995 to 2005 are to be used for general comparison. Certain data sets are calculated due to restructuring of IRMU units in 2020. Other changes may reflect changes in mapping accuracy or changes in forest type definitions. 1995 and 2005 data is an estimate based on prior reported percentages applied to current acreage.*

3000.2.5 ECOLOGICAL LANDSCAPES

This unit lies completely within the Northwest Sands Ecological Landscape. This landscape indicates management opportunities for dry forests such as jack pine, red pine, scrub oak, and associates such as aspen. There are also opportunities to mimic barrens characters by emulating historic fire patterns through harvesting practices. There may be some, limited, opportunity to provide for presumed climax overstory by managing some sites towards white pine, red pine types.

300.2.6 LANDFORMS

The landforms in this unit are rolling collapsed outwash plains with lakes common (*Webb Lake Collapsed Barrens*).

300.2.7 SOILS

The upland soils across nearly the entire unit are loamy sands (*Graycalm-Menahga complex; Keweenaw-Sayner-Vilas complex; and others*). The far southwestern corner of the unit has sand soils (*Menahga Sands*). There is significant acreage of hydric soils scattered across the entire unit, mostly muck (*Totagatic-Bowstring Ausable complex; Seelyeville and Markey soils; and others*) and some peat (*Loxley Muck Peat*).

300.2.8 FOREST HABITAT TYPES (UPLAND)

Nearly all of this unit tends to be more dominated by PArVAm, which indicates a best suitability for early successional species.

There are scattered areas of PQGCe, which indicates a best suitability for jack and red pine.

See Section 810.1.3 for more information on forest habitat types.

3000.2.9 WATER RESOURCES

All water resources within this unit are part of the Totogatic River watershed, which generally flow north to the Totogatic River, then south and west, into the Namekagon and Saint Croix River systems.

Lakes with Partial County Forest Frontage

Name	Acres	Frontage	Fishery	Designations
None				

Lakes within County Forest

Name	Acres	Fishery	
Wolf Springs Flow. #3	11.6	Yes – warm water	None
Wolf Springs Flow. #4	24.4	Yes – warm water	None
3 Unnamed ponds	7.6	No	None

Rivers and Stream with County Forest

Name	Miles	Type	Fishery	Designations
Totogatic River	6.5	Warm Water	Yes, Warm Water	ORW
Frog Creek	0.4	Warm Water	No	None
Wolf Creek	0.5	Warm Water	No	None
4 Unnamed	2.1	Warm Water	No	None

3000.2.10 RECREATION

- Totogatic River – This State designated Wild River is used for canoeing, hunting and fishing although fallen trees often block navigability.
- Wild River Trail – This WDNR owned State Trail is managed and maintained by Washburn County. The trail is an abandoned railroad grade and marks the western edge of the unit. The trail is managed as multiple use with an emphasis on ATV’s/UTV’s and snowmobiles. It is the “backbone” of the Washburn County motorized trail system.

3000.2.11 HISTORICAL, CULTURAL, ARCHEOLOGICAL

- The Totogatic River was likely a transportation route for early Native Americans and was also a transportation network for pine logs in the late 1800’s. It is probable that there are historical sites associated with those uses along the riverway and these sites will be identified and protected as they are found.
- There are numerous sites with evidence of old buildings that were likely homesteads in the early 1900’s. The north central portion of this unit, in particular, contains pits and old foundations scattered throughout.
- Additional historical, cultural or archeological sites may have been identified by the County and are kept confidential. Future sites will also be internally identified but kept as confidential.

3000.2.12 PROTECTION NEEDS

- This unit does contain some sand soils and a moderate level of fire risk. Deciduous trees are more dominant here, which provides less of a catastrophic wildfire risk as units to the west.
- There are areas of oak within this unit and some of the types are likely northern pin oak, which increases susceptibility to oak wilt. Monitor this unit for infestations.
- The Totogatic River bisects this unit and there are multiple potential access points to the river. Monitor for damage and erosion.

- A power line bisects this unit, which may provide increased risk for fire ignition.

3000.2.13 AESTHETICS

- The Totogatic River is an Aesthetic Zone with a no cutting setback of 100 feet from the river's edge or a visual distance from the water's edge.

3000.2.14 LAND CONTROL

Utility Easements/Agreements

- SESW 13 T42N-R12W. Electrical easement along north 20 feet of south boundary granted to Dahlberg Light & Power in 1981. No evidence of recorded document.
- SENE, NENE 6 T42N-R11W. Electrical easement 50 feet either side of line granted to Head of Lakes Electric Cooperative. Unknown Date. No evidence of recorded document.
- Section 3 T42N-R12W. Easement granted to Public Service Commission / ATC for 345 KV powerline in 2005. Recorded 314638
- N1/2 6 T42N-R12W. Electrical easement on southerly 50 feet granted to Dahlberg Light & Power. Unknown date. No evidence of recorded document.

Road Use Agreements to Private Parties

- NENW, NWNW 4 T42N-R11W. Access to SENW Section 4 T42N-R11W issued to Roger Nash. Expired 12/31/2005.

Other

- SESW 9 T42N-R11W. Deed transfer to Denninger in 2985 to satisfy adverse possession on approximately 4.07 acres. Recorded 195734.
- NWNW 1 & NENE 2 T42N-R12W. Approximately 11 acres withdrawn and deeded to Northwood School in 2002. Recorded 289012.
- NENW 4 T42N-R11W. In 2010, the owner of the NWNE filed suit claiming adverse possession of approximately 8.5 acres, claiming an old pasture fence to the west represented the line. Case was dropped after depositions. Continue to monitor area.

3000.2.15 FOREST MANAGEMENT GOALS AND GUIDELINES

1. Managing aspen should be considered as one of the primary goals for this unit. Make attempts to retain the existing acreage of aspen within the unit and slight increases are acceptable.

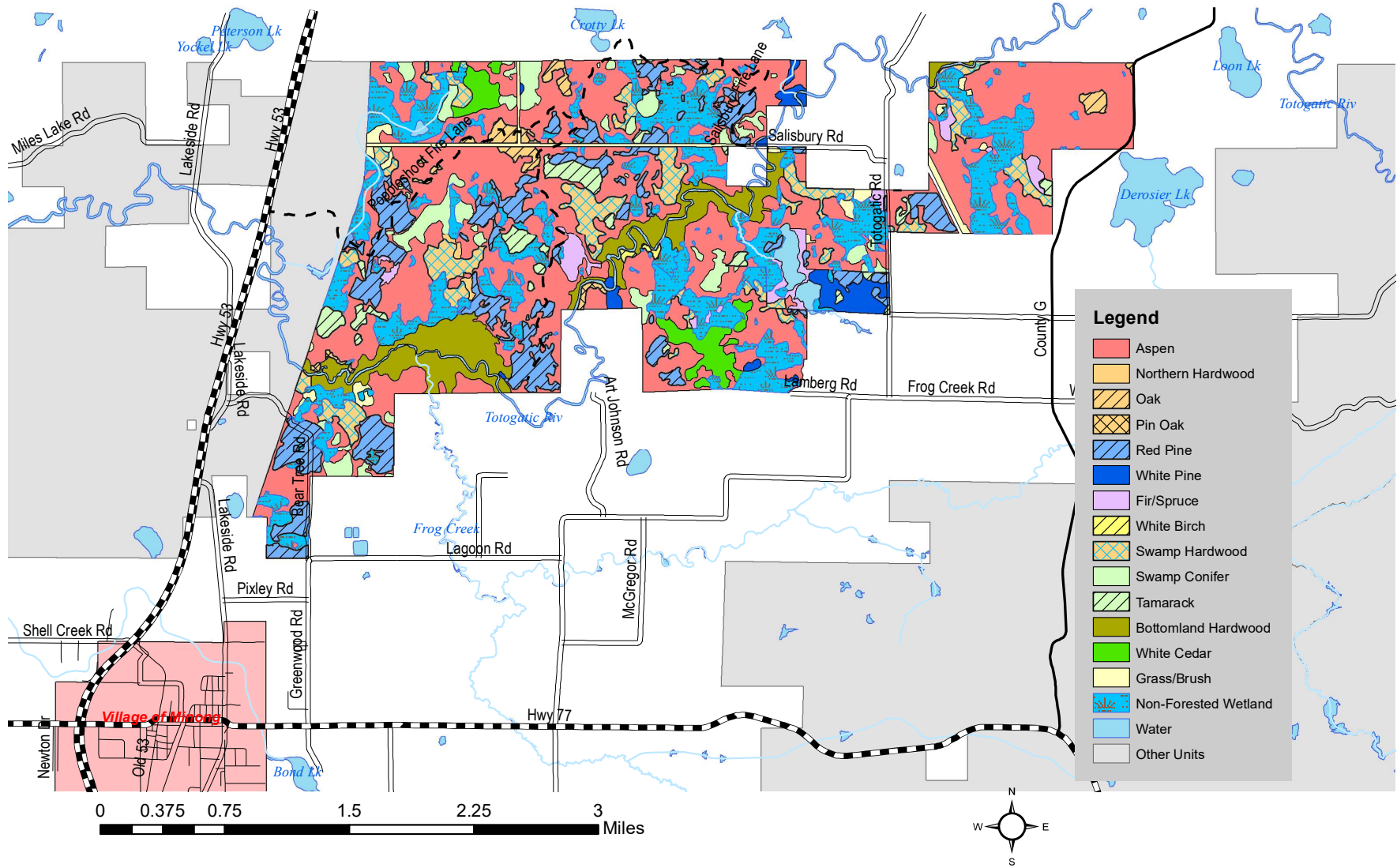
2. Retain stands of red oak on richer sites. Mechanical site preparation and/or prescribed burning or other tools should be considered to regenerate red oak. Any management in oak within this unit should include an analysis to ensure that target stands are not comprised of northern pin oak. Pin oak sites are to be converted to other forest types as a mitigating prescription to avoid oak wilt losses.
3. Red pine stands scheduled for rotation are to be replanted into red pine unless there are significant ecological reasons to convert to other types.
4. Additional white pine can be promoted on a limited basis, either as stands or stand components.
5. Management of bottomland hardwood types, which are primarily adjacent to the Totogatic River, should be for purposes of stand health and only with the supporting research that justifies management techniques.
6. Look for opportunities to add stands of white birch within this unit.
7. Cedar stands will not be managed unless the prescription has a reasonable expectation of regeneration success and deer population numbers are likely low enough for cedar seedling/sapling survival.

3000.2.16 SITE SPECIFIC MANAGEMENT OPPORTUNITIES AND GOALS

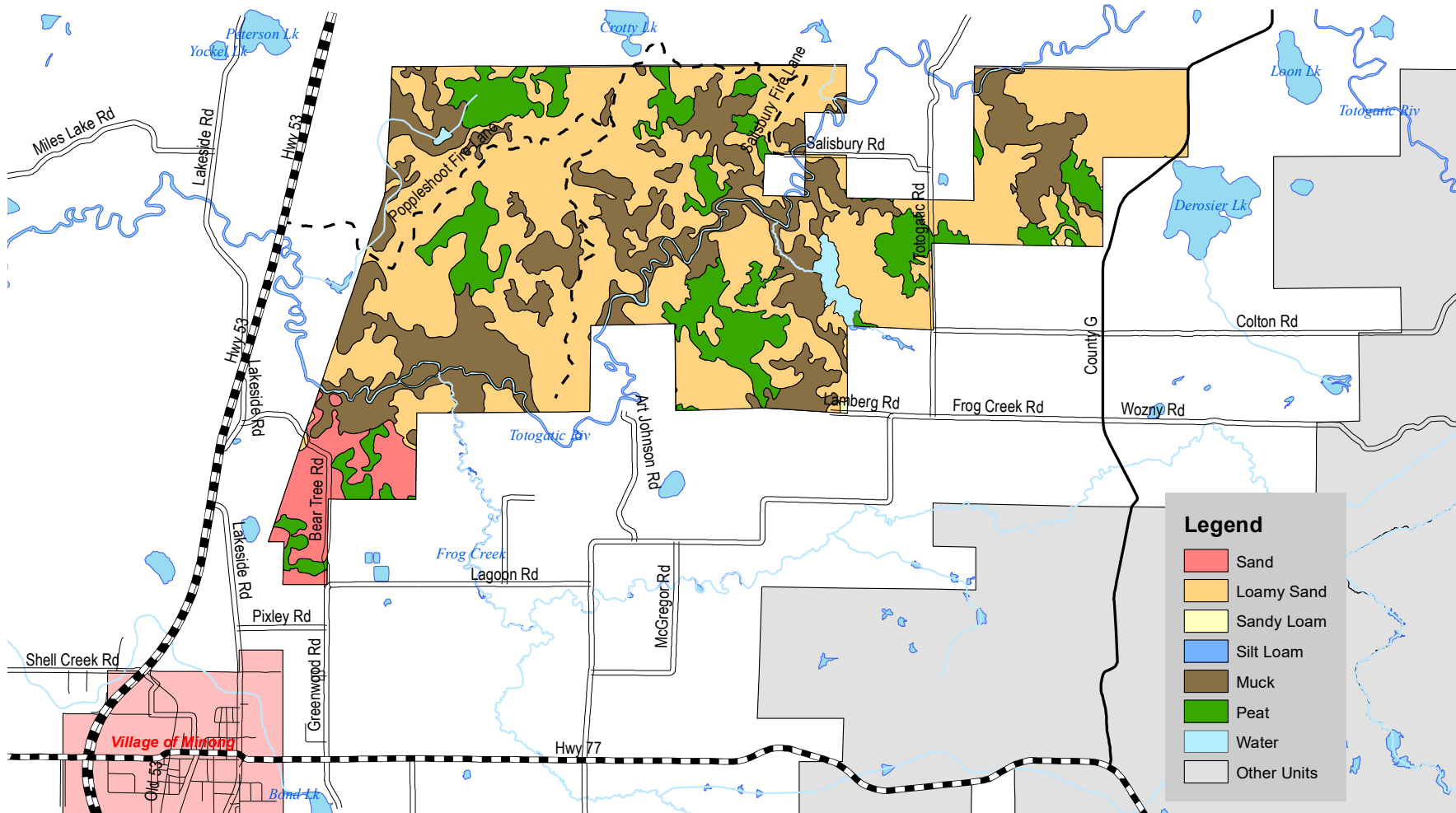
1. The County, as a priority, should pursue the following parcel for acquisition if they come available:
 - NSW, SENW Section 4 T42N-R11W
 - That part of NWNE Section 4 T42N-R12W lying west of the Totogatic River
 - That part of SW1/4 Section 8 T42N-R12W lying west of the Totogatic River
 - That part of the NWNW Section 17 T42N-R12W lying north and west of the Totogatic River
 - That part of the N1/2NE Section 18 T42N-R12W lying north of the Totogatic River
 - That part of the SW1/4 Section 2 lying west of Cty G
2. Monitor Totogatic River Access points to assure that erosion/damage is not occurring. Consider rehabilitation or potentially closing road access to certain points if damage becomes chronic.
3. The Wild River designation on the Totogatic River does not promote additional recreational development or access. Canoe landings at roadsides may be further developed or established to prevent erosion but other developments along the river are not recommended by this Plan.
4. Remove/rehabilitate Wolf Creek Flowage #4 on the recently acquired Stoddard property in Section 9 T42N-R11W if the project is not completed prior to the adoption of this Plan.

5. Upgrade/restore Wolf Creek Flowage #3 on the recently acquired Stoddard property in Section 9 T42N-R11W.
6. Continue to designate the DeRosier subunit as a primitive area (east of Totogatic Road and west of County G).

3000.2.17 GENERAL FOREST TYPE MAP



3000.2.18 GENERAL SOILS MAP



Legend

- Sand
- Loamy Sand
- Sandy Loam
- Silt Loam
- Muck
- Peat
- Water
- Other Units

