

Washburn County Health & Human Services Department

Annual Report

2022



Marie Schrankel, Director

304 2nd Street

PO Box 250

Shell Lake, WI 54871

Human Services: 715.468.4747

Public Health: 715.635.4400

humanser@co.washburn.wi.us

MISSION:

“PROMOTING A SAFE AND HEALTHY COMMUNITY”

Core Values:

- *We provide timely and accessible services*
- *We honor individual rights and differences*
 - *We are committed to excellence*
 - *We assess community needs*
- *We utilize well-trained and empathetic staff*
 - *We maximize our resources*
- *We value teamwork and collaboration*

2022 HEALTH & HUMAN SERVICES BOARD

The Washburn County Health & Human Services Department is governed by the Health & Human Services Board, which consists of the following elected officials and community members. The Board has primary responsibility for policy development and guidance for the provision of a full range of comprehensive services provided by the department, a legal entity established by state law.

David Wilson, HHSD Board Chair, County Board Representative

Sandy Johnson, HHSD Vice Chair, County Board Representative

Jeanne Bruce, County Board Representative

Jerry Smith, County Board Representative

Kasey King, County Board Representative

Paul Johnson, County Board Representative

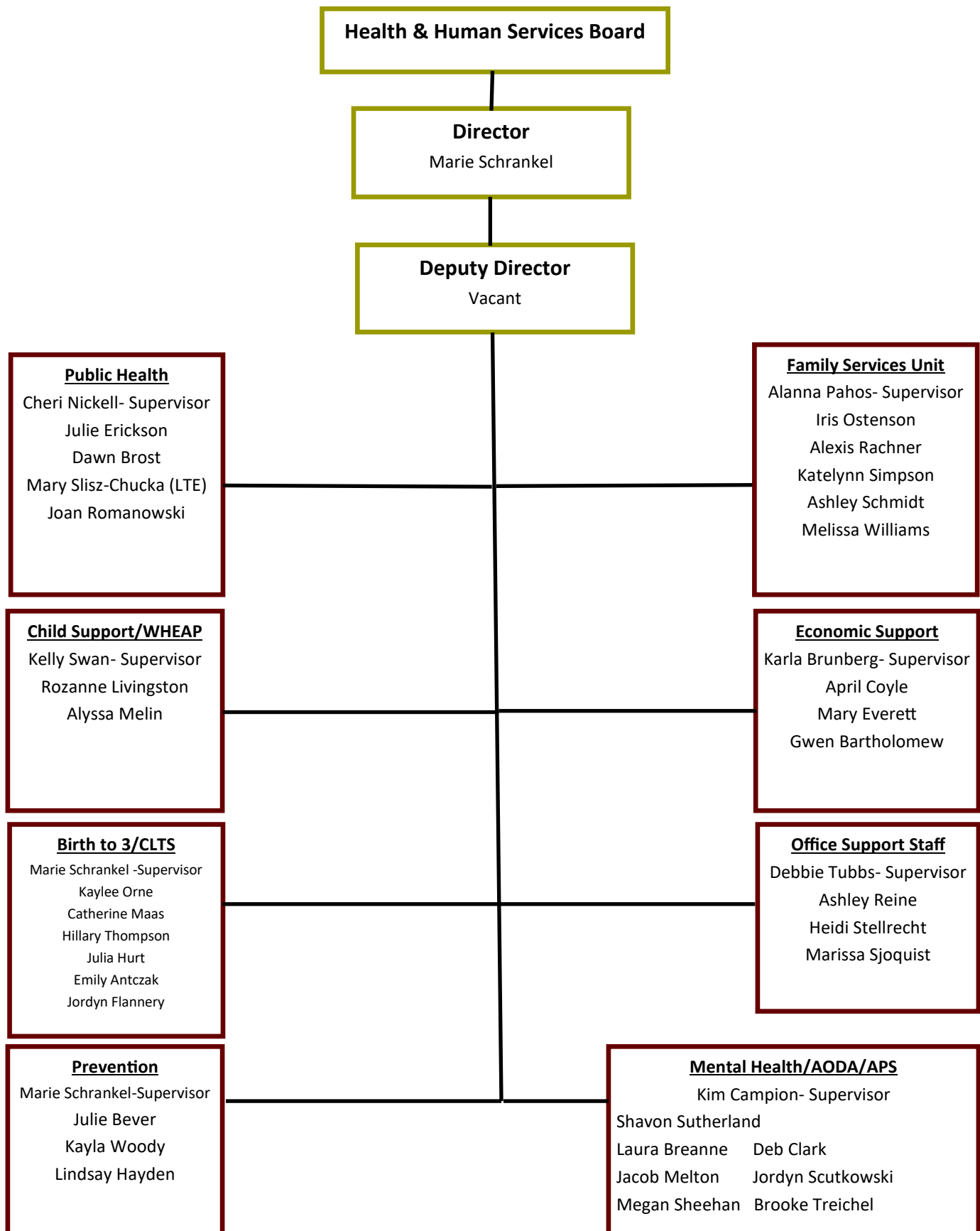
Terry Dryden, Citizen Representative

Lynn Berguis, Retired Nurse, Citizen Representative

John Sahlstrom, Citizen Representative

Chuck Warner, Citizen Representative

WCHHSD Organizational Chart 2022



WCHHSD 2022 Financial Summary

2022 Gross Expenditures by Department		
Department	Total Dollars	Percentage of Actual
Public Health	\$ 520,236	9%
Human Services	\$ 4,875,974	80%
Economic Support	\$ 360,197	6%
Child Support	\$ 310,343	5%
Total	\$ 6,066,750	100%

2022 Sources of Revenue		
Intergovernmental	\$ 2,647,896	44%
Tax Levy	\$ 1,191,902	20%
Department (Public Charges)	\$ 2,226,952	36%
TOTAL	\$ 6,066,750	100%

Economic Support Services (ESS)

The Economic Support Services Section (ESS) provides a variety of financial supports and services to families and individuals. These programs include Child Care, Healthcare, Food Share and Caretaker Supplement. The ESS staff is located in the Washburn County Services Building. Washburn County ESS is part of the 10 county Great Rivers Consortium, serving NW Wisconsin for enrollment and case management services.

Wisconsin Shares (Child Care)

The Wisconsin Shares child care subsidy program supports eligible families by funding a portion of the cost of child care while the parents are working or participating in an approved activity.

Families Served	51
Children Served	84
Total Payments	\$219, 317

Food Share

FoodShare Wisconsin was created to help stop hunger and to improve nutrition and health. FoodShare helps people with limited money buy the food they need for good health. They are people of all ages who have a job but have low incomes, are living on small or fixed income, have lost their job, and are retired or disabled and not able to work.

All recipients	2900
Eligible Adults	2023
Eligible Children	905
Total Foodshare Issuance	\$6,002,446

Healthcare

Medicaid/Badgercare Plus is available to assist participants with the cost of healthcare. Medicaid is available to those who are 65 and older, disabled or blind, and meet the non-financial and financial requirements of the program. BadgerCare Plus provides healthcare coverage for low income customers who meet all non-financial and financial requirements of the program.

Eligible Individuals	5166
Healthcare Expenditures	\$37,318,569

Energy Assistance

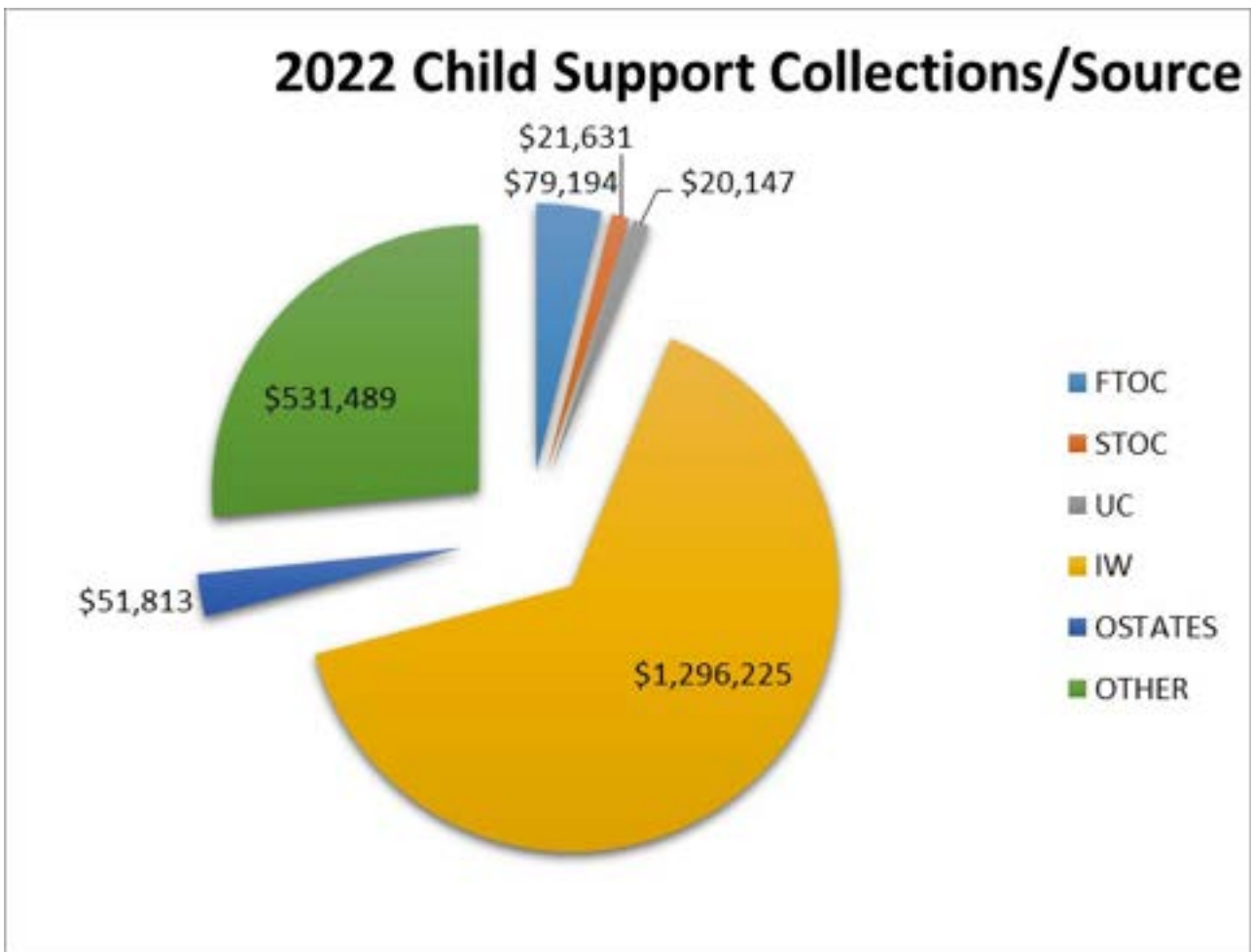
Energy Assistance (EA) generally provides a one-time payment to assist with the cost of home heating based on family size, income, and fuel usage. This program can also provide crisis assistance and furnace repair and replacement.

Beginning in March of 2022, the Energy Assistance program contract with the state was shifted to WestCAP. As a result, Washburn County HHSD no longer manages this program or has access to consumers served.

Child Support

Child Support Programming helps parents get court orders for financial and medical support for their children. It also enforces these support orders when needed, and makes sure all money collected is paid out correctly. Child support staff help the courts to establish paternity or seek back-payment when needed.

	Jan	Feb	Mar	Apr	May	Jun	July	Aug	Sept	Oct	Nov	Dec	Totals
FTOC	\$ 254	\$ 1,516	\$ 20,335	\$ 11,649	\$ 19,718	\$ 7,266	\$ -	\$ 568	\$ 9,547	\$ 4,049	\$ 2,891	\$ 1,400	\$ 79,194
STOC	\$ -	\$ 5,381	\$ 5,755	\$ 8,209	\$ 371	\$ 794	\$ 205	\$ 75	\$ 840	\$ -	\$ -	\$ -	\$ 21,631
UC	\$ 3,301	\$ 3,068	\$ 2,796	\$ 2,349	\$ 2,689	\$ 1,547	\$ 645	\$ 1,208	\$ 1,439	\$ 263	\$ 186	\$ 656	\$ 20,147
IW	\$107,609	\$100,062	\$108,998	\$113,285	\$ 109,663	\$108,352	\$106,684	\$105,781	\$111,217	\$111,093	\$106,890	\$ 106,591	\$ 1,296,225
OSTATES	\$ 5,024	\$ 5,094	\$ 5,332	\$ 4,894	\$ 4,575	\$ 4,477	\$ 3,310	\$ 5,190	\$ 4,052	\$ 3,964	\$ 3,109	\$ 2,793	\$ 51,813
OTHER	\$ 37,809	\$ 40,022	\$ 42,117	\$ 45,467	\$ 58,813	\$ 44,276	\$ 42,084	\$ 52,130	\$ 42,907	\$ 37,636	\$ 50,059	\$ 38,169	\$ 531,489
	\$153,997	\$155,144	\$185,334	\$ 185,854	\$ 195,830	\$166,712	\$152,927	\$164,951	\$170,000	\$157,005	\$163,136	\$ 149,610	\$2,000,500



FTOC - FEDERAL TAX INTERCEPT

IW- INCOME WITHHOLDING

STOC - STATE TAX INTERCEPT

OSTATES - OTHER STATES

UC - UNEMPLOYMENT COMPENSATION

OTHER - LIENS, ACCOUNT SEIZURES, SALE OF PROPERTY, PAYER PAID

Social Work Programs

Washburn County HHSD provides a broad spectrum of services to serve the lifespan of its community members. It is the goal of the department to provide choices to consumers to best meet the needs of individuals and families.

Birth– 3

Birth-3 is a Federally Mandated program to provide Early Intervention services to parents and children in their homes or other natural environment. These services are family centered and may include, but are not limited to; service coordination, physical therapy, occupational therapy, speech therapy, nutritional education, parent education & special education. We work with a team of providers in designing a program that both meets the requirements of the State’s program and is suited to the unique needs of each family. The length of time for a family’s involvement can range from 1-2 months to a total of 3 years, depending on the needs of the child.

New Referrals	17
New Evaluations	5
Ongoing case	5

Children’s Long Term Support (CLTS) Services

Children with disabilities that occur during their developmental period frequently have severe impairments that are likely to continue indefinitely. These children and their families often require lifelong services, individualized supports, and other forms of assistance. Community based waiver programs help families support and maintain their children with developmental disabilities, physical disabilities, severe emotional disturbances or autism in their own homes. Services are individually designed to help support the child and family and to promote health, safety, participation and independence in the home and community.

New Referrals	43
New Assessments	38
New Enrollments	36
Waitlist additions	36
Total served	119

Children’s Community Options Program (C-COP)

Children’s COP provides individualized funding, information and support to families with a severely disabled child to maximize their child’s abilities and to keep them safely in the home. The program works collaboratively with the Children’s Long Term Support (CLTS) Waiver program for families.

2021 State Allocation	\$18,637
Total families served	32

Mental Health and Substance Abuse

Washburn County provides several services to address mental health and substance abuse needs in the community. In 2021, Washburn County continued to offer core services including emergency services (crisis) linkage and follow up, targeted case management and follow up on referrals made to the agency to connect community members to local services and resources. Washburn County continued to work collaboratively with community agencies for substance abuse counseling, mental health counseling and 24/7 mental health emergency services.

Service	# Consumers Served	Service	# Consumers Served
Case Management	20	CCS (Adults and Children)	88
Outpatient Therapy (county funded)	1	CST (Children)	14
Psychiatric Nursing	8	Drug & Alcohol Court	3
Psychiatry	45	AODA Inpatient Treatment	1
CSP (Adults)	2	Emergency Detentions	13

2021 in Review:

Washburn County continued to show growth in the CCS program in 2022. We served over 88 different consumers with programming aimed at skill development, employment skills, peer support, and traditional community services such as individual and family therapy and substance abuse counseling. During 2022, there were **127 crisis calls** in Washburn County. Of these calls, there were **13 Emergency Detentions** (involuntary psychiatric hospitalization), **12 voluntary hospitalizations** and **102 diversions**. This reflected a 23% increase in calls compared to 2021. Emergency Detentions remained consistent, but voluntary hospitalizations increased sharply from 2021 to 2022. This trend indicates that more people with serious mental health needs reached out for help in our community in 2022.

Adult Protective Services

Adult Protective Services (APS) provide intervention and follow up for elderly and at-risk individuals (vulnerable adults). APS receives referrals regarding individuals who may be experiencing abuse, neglect, financial exploitation or self-neglect. Washburn County provides a variety of services including: investigations/assessments of abuse or neglect, education/informational resources, and assistance with guardianships and protective placements. Total referrals were down slightly from 2021, but guardianships and protective placements increased, showing more need for protective services.

Total referrals	84
Screen ins	58
Guardianships	17
Protective Placements	6
Annual Reviews	36

Family Services Unit

Programs under Family Services include services to children and their families that are experiencing issues in their lives which impact daily functioning. These issues may be delinquency, abuse, neglect, or a need for special services that the parent/guardian may not be able to provide. The focus is to assist families to become self-sufficient in an environment that provides for child safety.

Child Protection Investigations

Child protection referrals are received through the agency’s access worker. The information is documented and reviewed against state standards to determine the appropriate response. Reports meeting criteria to be screened in are then assigned for an assessment of family conditions, circumstances, and behaviors to determine if families need ongoing agency intervention in order to keep their children safe. Reports not meeting criteria to be screened out are often offered community resources.

In 2022, the Department received 312 Child Protective Referrals. Of these, 86 were screened in for investigation. The Department referred 29 families to the Community Response Program and offered voluntary child welfare services to 13 families.

Child Protection Investigations 2022

Type of Report	# of Incidents	# of Children	# of Substantiated Referrals	# of Children with a Substantiation
Physical Abuse	27	30	1	1
Neglect	51	77	11	19
Sexual Abuse	16	16	6	6
Emotional Abuse	2	2	0	0
Unborn Child Abuse	0	0	0	0
TOTALS	96	125	18	26

Ongoing Child Protection Cases

A case may be transferred to ongoing child protective services if warranted at the closure of the child protection investigation. Ongoing services may be court ordered or voluntary. These services assist families in addressing concerns for children identified as unsafe or at risk for maltreatment. Services and case management remain in place until these concerns are resolved.

In 2022, of the 86 cases screened in, 20 were opened to some form of ongoing child protective services.

Out of Home Care

Placements outside of the home are utilized when youth are not able to live in their own home because they are unsafe, have special care or treatment needs, or have other barriers to remaining in the community. Generally, placement in out-of-home care is temporary and intended to give families time to make necessary changes to reunify.

In 2022, 30 total children were served in out of home care. The table below reflects the number of children in care at the end of the year and their placement settings.

2022 Placement Types

Placement Type	# youth served	Placement Type	# youth served
Court Ordered Kinship	5	Group Home	0
Relative Foster Care	4	Residential Care Center	2
Non-Relative Foster Care	3	Secure Detention	0
Total Placements (End of Yr.)	14		

Voluntary Kinship & Subsidized Guardianship

Kinship Care provides financial support when a child is unable to live in their home and lives with a relative, who must be certified. Without kinship, youth may otherwise be subject to placement in a more restrictive setting.

Subsidized guardianship is a permanent placement option for youth in care whose caregivers meet certain criteria and become a legal guardians to the youth.

22 children were served in voluntary or long-term kinship care by 15 kinship providers.

15 children were served in subsidized guardianship

Washburn County had 4 licensed foster homes in 2022.

Foster Home Licensure

The agency is responsible to recruit and license foster families utilizing the Structured Analysis Family Evaluation (SAFE) home study assessment.

In 2022, three providers withdrew their licensure, leaving 4 active homes at the end of the year.

Youth Justice

Referrals are made to youth justice when a youth has been involved in breaking the law, is truant from home or school, or is in need of protection or services. The goal of youth justice is to protect the community, impose accountability, and equip youth with competencies to live responsibly and productively. Social work staff assess a youth’s level of risk, needs, and responsivity factors to determine necessary interventions or services.

Case dispositions include counseling and closing the case, diverting the youth to other programming, deferred prosecution agreements, or formal court involvement.

2022 Delinquency Referrals			
Ages:	# youth	Sex:	# youth
Under 10	0	Female	10
10-12	6	Male	17
13-15	14		
16-17	7	Total	27 youth referred; 35 referrals received

2022 Non-Delinquency Referrals	
Ages:	# of youth
JIPS-Truancy	1
JIPS– Non Truancy	1
Ordinance/Civil Violation	0
Total	2

2022 Dispositions	
Counsel and Close	25
Deferred Prosecution Agreement	9
Formal Delinquency Petition	1
Other	0

Offense	Referrals	Offense	Referrals
Sexual Assault (Any Degree)	3	Possess Dangerous Weapon	2
Expose Child to Harmful Material	3	Possess Drugs/Drug Paraphernalia	1
Battery	7	Resisting/Obstructing Officer	2
Carrying Concealed Weapon	1	Retail Theft	1
Criminal Damage to Property	3	Strangulation/Suffocation	1
Criminal Trespass	1	Terrorist Threats	1
Disorderly Conduct	20	Theft	1
Parent Unable to Control	1	Truancy	1
Violate Restraining Order	1		
Possession of Child Pornography	3	Total	53

Prevention Services

Prevention Services have been established in Washburn County HHSD since 2018 with the addition of a Prevention Specialist. Since that time, this unit has grown to 3 staff and multiple partners. In 2022, the Youth Wellness Screen (YwScreen) was implemented in all 4 school districts for the 5th consecutive year. Other programming has continued to expand to take opportunities to educate all youth on mental health and substance use prevention as well as more targeted approaches for at-risk youth in our community.

2022 YwScreen	
Total Screened:	73
Resiliency groups	48 youth served

YwScreen– Universal Screening tool for consenting freshman in all 4 school districts. Youth with elevated scores are provided with 24 hour follow up from a clinician to a parent. Youth needing additional support are referred to a Resiliency group facilitated in the school for skill development.

A primary goal of Prevention efforts is to educate the community in various areas related to mental health and substance use, provide preventative measures such as medication lockboxes and reduce stigma related to mental health and substance use. A great way to reach large groups of people is community events.

2022 Outreach Activities	
Event	# reached
Boo Haha	300
Family Fest	400
School open houses	100
Farmers Markets	1000

Leadership	
Event	# of youth
Leadership Academy	10
Leadership Retreat	36
CITY	14 (2x/mo)
Healthy Minds	12 (36 mtgs)

Skill development and leadership in youth continues to be a primary goal of the Prevention Team as resilient youth make a healthier community. The Leadership Academy focuses on high school age youth to teach skills, advocacy and leadership. The Retreat focuses on middle school youth as an introduction to youth leadership at a 2.5 day camp. CITY and Healthy Minds are recurring groups established with ongoing initiatives and goals in Washburn County.

Prevention staff have been trained in multiple evidence bases or evidence informed curriculums that have demonstrated effective methods to reduce substance use or teach skills related to helping others with mental health concerns. Catch My Breath and InDepth focus on vaping and nicotine use. Teen Mental Health First Aid focuses on basic skills for youth to assist peers who express mental health concerns.

School/Community	
Curriculum	# reached
Catch My Breath	214
InDepth	4
tMHFA	60